
2013. 12. 31

	- 1 -
1.1	- 1 -
1.2	- 1 -
1.2.1	- 1 -
1.2.2	- 1 -
1.2.3	- 2 -
1.3	- 2 -

6.3	- 18 -
6.4	- 19 -
6.5	- 19 -
6.5.1	- 19 -
6.5.2	- 19 -
6.5.3	- 20 -
	- 28 -
7.1	- 21 -
7.2	- 22 -
7.3	

11.1	- 34 -
11.2	- 34 -
11.3	- 34 -
11.4	- 35 -
11.5	- 35 -
11.6	- 36 -
11.7	- 36 -
11.8	- 36 -
11.8.1	- 36 -
11.8.2	- 36 -
	- 37 -
12.1	- 37 -
12.2	- 37 -
12.3	- 37 -
12.4	- 38 -
12.5	- 38 -
12.5.1	- 38 -
12.5.2	- 38 -
12.5.3 "e 1		

1.1

"

"

"

"

1.2

1.2.1

1

2010 113

1.2.2

1

2007 8 30 2007

11 1

2

1989 12 26

3

1984 5 11 2008 2

28 2008 6 1

4

2000 3 20

5

2000 4 29 2000 9

1

6

2004 12 29

2005 4 1

7		1996	10	29		1997
3	1					
8		2002	6	29		2002 11
1						
9		1				2008
8	1					
10		2002	1	9		2002 3 15

1.2.3

- 1 GB3095-1996
- 2 GB3838-2002
- 3
- 4 GB4915-2004
- 5
- 6
- 7 HJ434-2008

1.3

2.1

1999 10 50%

5#

4500cm²/g 0.5% BMH

2002 9 100 2000 6 2002 4

2002 12

100 9222.27

905.86 10.18% 650

15 3 4.5

2005

2.2

48#

1500m

6km 1km

4hm² 115

2.3

2.1

2.4

1

5#



99.83%

32

99%

2

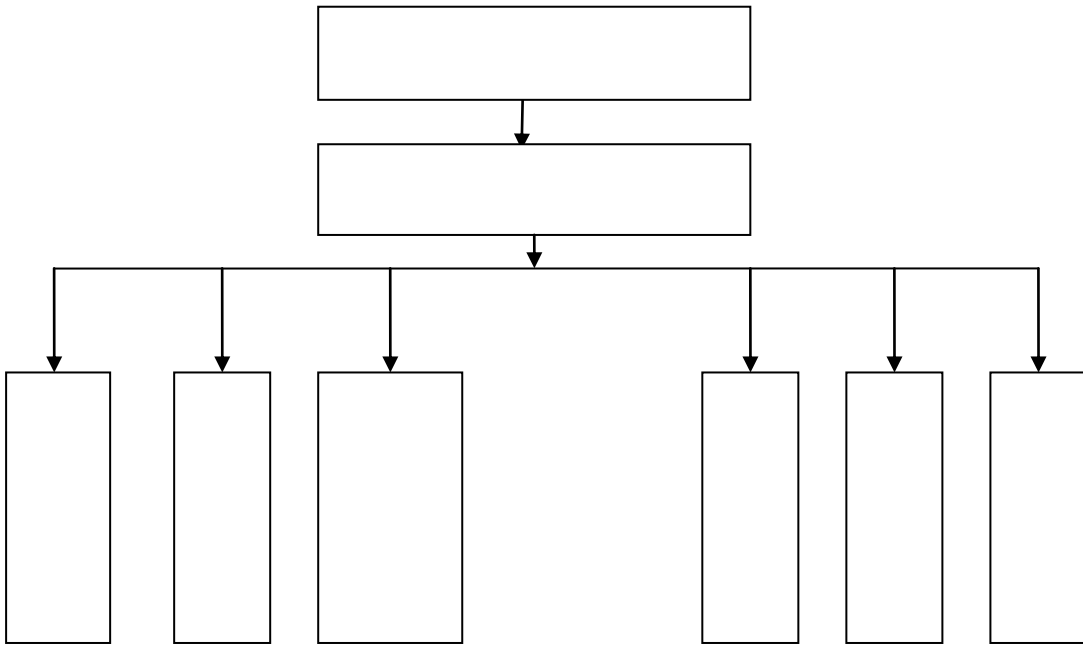


3.1

1.

2.

3.



3.2

3.2.1

3.2.2

3.2.3

3.2.4

3.2.5

3.2.6

3.2.7

3.3

1

2

3

4

5

6

7

8

4.1

(1)

(2)

(3)

(4)

(5)

4.2

4.2.1

4.2.2

(1)

(2)

(3)

(4)

(5)

(6)

4.2.3

(1)

(2)

(3)

5.1

(1)

10

100

5

1

(2)

3

10

50

100

1

5

2000

1

(3)

3

10

50

5000

1

500

2000

(4)



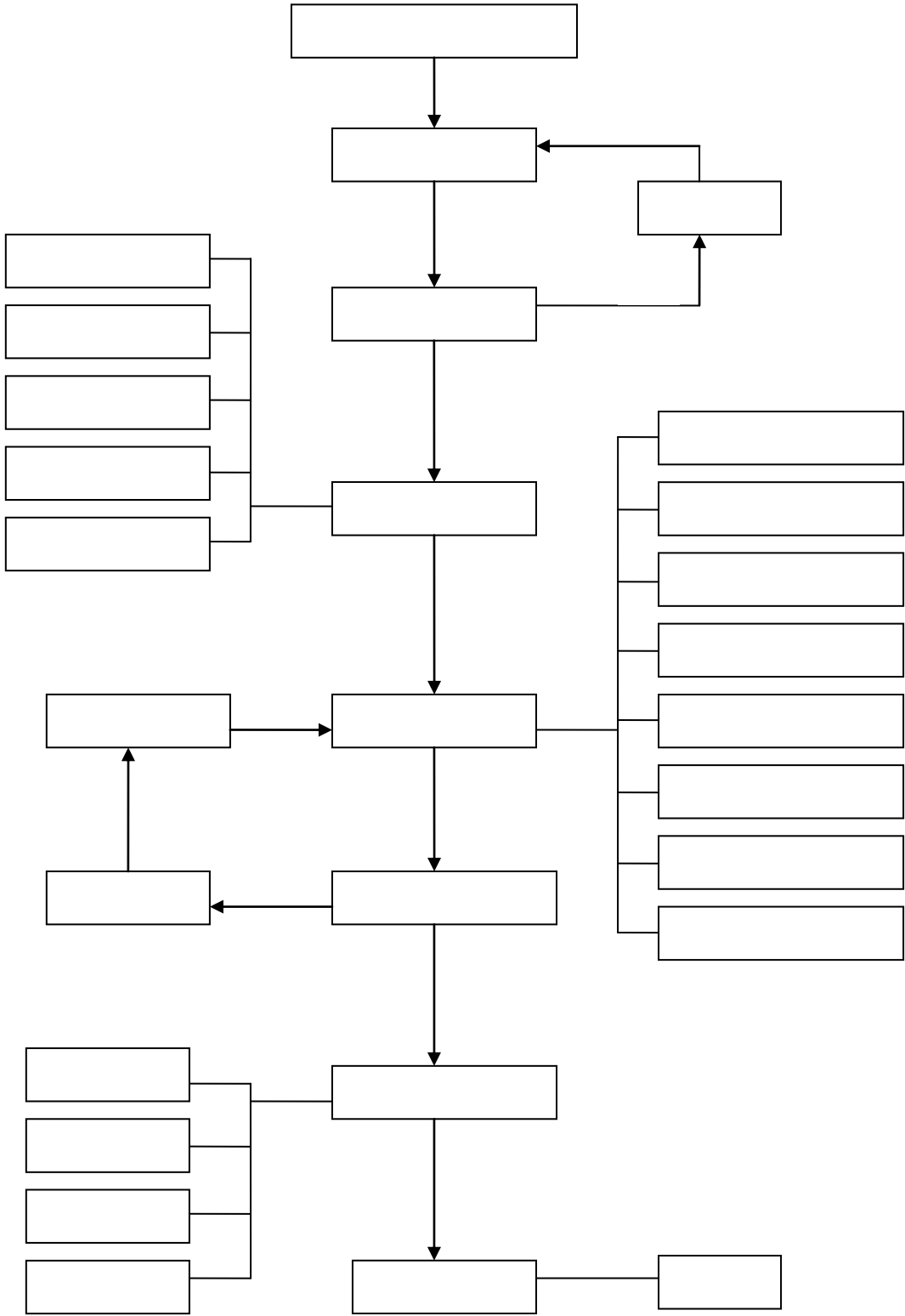
1

2

1

2





5-1

6.1

6.1.1

1

2

3

4

5

6.1.2

2

6.2

6.2.1

1

2

3

6.2.2

1

2 ()

3

4

5

6.3

6.4

1

2

6.5

6.5.1

(

)

6.5.2

	()	
		027 86536050
		027 51600978
110		110
		119
		120

6.5.3

1	86528609	86528649
2		C

7.1

:

7-1

7-1

			25	
6			2	
			20	
			20	
			5	

7.2

1

2

3

4

5

7.3

7.3.1

7.3.1.1

7.3.1.2

7.3.1.2.1

1

2

3

4

5

6

7.3.1.2.2

1

2

3

7.3.1.3

1

2

" "

" "

3

4

7.3.1.4

1

2

3

4

7 3 2

- .
- .
- .
- .

7-2

7-2

		8mi n	53. 46kg/30s
		10s	17. 82kg/10s
	0 CO	1) 2) 3)	25. 78kg/5s
		1) 1 2mi n 2)	153. 55kg/2mi n

8.1

1

2

3

4

5

6

8.1.1

8.1.2

8.1.3

8.1.4

8.2

8.2.1

8.2.2

8.2.3

8.2.3.1

8.2.3.2

8.3

ñ "dQa' 'L€

8.4

8.4.1

()

8.4.2

X 9" j"È ÒNxC'ó# j"È .Q),„E2 ~ª 1 /C°~?± ñF xA ‡ÐZNE`úp² ñ ^?± ñ† úÐ F

9.1

9.2

9.3

9.4

10.1

10.2

10.3

10.4

10.5

11.1

11.2

11.3

1

2

3

4

5

1

2

3

4

5

6

7

8

9

11.4

12.1

1

2

24

24

3

4

12.2

12.3

1

2

3

9			
10			
11			
12			
13			

13. 2. 2

13. 2. 3

13. 2. 4

13. 2. 4. 1
